



CALIFORNIA SPATIAL REFERENCE CENTER (CSRC)/ CALIFORNIA REAL TIME NETWORK (CRTN): EXECUTIVE COMMITTEE ELECTIONS (JUNE 2026) & CRTN CONSORTIUM OCTOBER 16, 2025

Maria Turingan

CSRC Coordinating Council Meeting

Meeting Location: California Natural Resources Agency, Sacramento, CA

Hosted by California Department of Water Resources (DWR) and
the California Land Surveyors Association (CLSA)

UC San Diego





PREVIEW

1) California Spatial Reference Center (CSRC)

- UCSD Support Group at Scripps Oceanography, UCSD
- Three Core Groups: Coordinating Council, Executive Committee, CRTN Consortium
- Executive Committee Elections

2) California Real Time Network (CRTN)

- CRTN Consortium
- CRTN Usage – transitioned to new servers

3) CSRC/CRTN Funding

4) CSRC/CRTN Social Media



Matt, Glenn, and Yehuda at CRTN Station



CSRC AT UCSD, SCRIPPS OCEANOGRAPHY

- **CSRC is part of the Part of the UC and UCSD, a non-profit, public research university**

UC San Diego



- **Regents of the University of California (UC)**
 - **University of California San Diego (UCSD)**
 - **Division: Scripps Institution of Oceanography (SIO)**
 - **Department: Institute of Geophysics and Planetary Physics (IGPP)**
- **UCSD**, founded in 1960, is recognized as one of the top 15 research universities worldwide
 - **Scripps Institution of Oceanography**, founded in 1903, has been one of the most reputable institutions for global earth science, oceanographic research, and education
 - **Scripps Orbit and Permanent Array Center (SOPAC)** research group at Scripps Oceanography operates CSRC/CRTN and provides staff, facilities and infrastructure





CSRC – UCSD SUPPORT GROUP

- **CSRC, began in 1999 as a UCSD Support Group**, providing public outreach and other support for the University's mission
- **For over 25 years, CSRC has brought together**
 - Land Surveyors, GIS Professionals
 - Scientific and Academic Researchers
 - State and Local Governments
 - Geodetic and Geophysical Communities
 - Major Partners: NOAA's National Geodetic Survey (NGS), the California Department of Transportation, and NOTA EarthScope



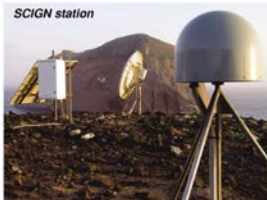
CSRC Inception Ceremony



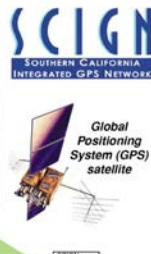
UNDERSTANDING EARTHQUAKE HAZARDS IN URBAN AREAS

SCIGN—New Southern California GPS Network Advances the Study of Earthquakes

Southern California is a giant jigsaw puzzle, and scientists are now using GPS satellites to track the pieces. These puzzle pieces are continuously moving, slowly straining the faults in between. That strain is then eventually released in earthquakes. The innovative Southern California Integrated GPS Network (SCIGN) tracks the motions of these pieces over most of southern California with unprecedented precision. This new network greatly improves the ability to assess seismic hazards and quickly measure the larger displacements that occur during and immediately after earthquakes.



SCIGN stations receive radio signals from GPS satellites overhead...



- **CSRC was dedicated in 2001** at Scripps Oceanography
- **Southern California Integrated GPS Network (SCIGN) unveiled in 2001** - CSRC helped the Jet Propulsion Laboratory (JPL), the Southern California Earthquake Center (SCEC), the US Geological Survey (USGS) install permanent GPS stations throughout Southern California



CSRC – THREE CORE GROUPS

1) CSRC Coordinating Council

- Approximately 60 volunteers representing CSRC stakeholders and organizations

2) CSRC Executive Committee

- 15 core volunteers
- Serves as the board to steer CSRC

3) California Real Time Network Consortium

- Provides funding support to CRTN/CSRC
- Directs CRTN

<http://sopac-csrc.ucsd.edu/index.php/coordinates-council/>
<http://sopac-csrc.ucsd.edu/index.php/executive-committee/>
<http://sopac-csrc.ucsd.edu/index.php/consortium-members/>



CSRC recognized Dr. Yehuda Bock with the Founder's Award, April 2023

Member



CSRC – EXECUTIVE COMMITTEE MEMBERS ELECTED



Art Andrew, Orange County

Position	Member	Organization
Chairperson	Steven Martin	Retired EBMUD & San Diego County
Vice-Chairperson	Kimberley Holtz	Port of Long Beach
Secretary	Timothy McKinney	Michael Baker International
Treasurer	Rich Maher	KDM Meridian
Member	Adrian Aguirre	Jacobs
Member	Kevin Maxwell	Caltrans
Member	Taleah Quemada	Long Beach Energy Resources
Member	Pat Tami	California DWR



CSRC – EXECUTIVE COMMITTEE MEMBERS NON-ELECTED

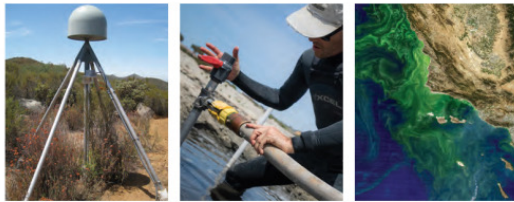


Position	Member	Organization
CSRC Director	Dr. Yehuda Bock	Scripps Oceanography, UCSD
Immediate Past Chairperson	Humberto Gallegos	California Baptist University
Chancellor of UCSD designee	Dr. John Orcutt	Scripps Oceanography, UCSD
Director of IGPP, Scripps, UCSD	Dr. Peter Shearer	Scripps Oceanography, UCSD
NOAA's National Geodetic Survey (NGS)	Dr. Dana Caccamise	NOAA NGS
California Geodetic Coordinator	Scott Martin	CA Geodetic Coordinator & AAGS President
CSRC Executive Manager	Greg Helmer	Psomas

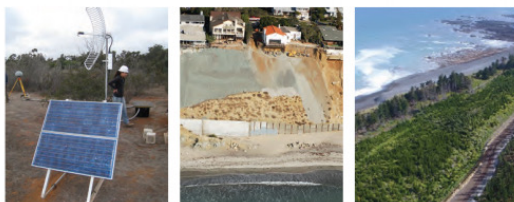
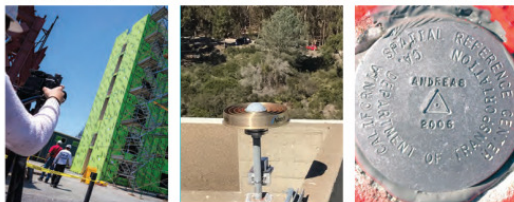


CSRC – EXECUTIVE COMMITTEE ELECTIONS JUNE 2026

Are you interested in serving on the
Executive Committee (EC)?



CALIFORNIA SPATIAL REFERENCE CENTER



STRATEGIC PLAN // DECADE THREE // AUGUST 30, 2021

SOPAC



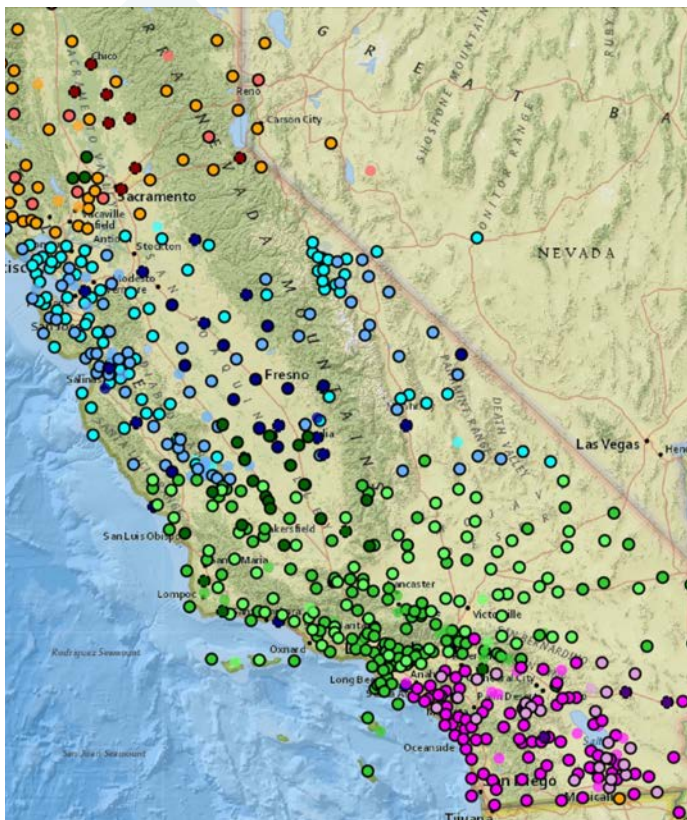
Four EC Positions Open July 2026
(incumbent):

- 1) Secretary (*Timothy McKinney*)
- 2) Treasurer (*Rich Maher*)
- 3) EC Member (*Kevin Maxwell*)
- 4) EC Member (*Taleah Quemada*)

CSRC Strategic Plan (2021): see http://sopac-csrc.ucsd.edu/wp-content/uploads/2021/09/CSRC_NextDecadeStrategicPlan2021_Reduced.pdf



CALIFORNIA REAL TIME NETWORK (CRTN) CONSORTIUM



- 1) **PG&E**, Eric Albanese
- 2) **Los Angeles Department of Water and Power**, John Tosto
- 3) **Blue White Robotics**, Ron Berenstein (working in Agriculture, Fresno)
- 4) **Metropolitan Water District**, Brian Wiseman
- 5) **California Land Surveyors Association**
- 6) **City of Los Angeles**, Michael Van Egdom, Dept of Public Works, Engineering
- 7) **Riverside County Flood Control and Water Conservation**, J. Tremba, J. McNeil
- 8) **San Diego County**, Department of Public Works, Neil Kussat
- 9) **Riverside County Transportation Department**, David McMillan
- 10) **Port of Long Beach**, Kimberley Holtz
- 11) **California Department of Transportation**, Kevin Maxwell
- 12) **Los Angeles County**, Public Works, Steve Hennessee
- 13) **California Spatial Reference Center**, Chairperson, Steven J. Martin
- 14) **Scripps Institution of Oceanography, UCSD**, Yehuda Bock

<http://sopac-adj.ucsd.edu/crtm-map/>

UC San Diego





CSRC/CRTN – FUNDING

Geisel Library Project with Structural Engineering Dept and KDM Meridian



Matt, Glenn, and Yehuda at CRTN

1) Research Grants (primary)

- **CSRC/CRTN operations are leveraged by and depends on SOPAC research grants primarily from NASA, NOAA's National Geodetic Survey, and National Geospatial-Intelligence Agency (NGA).** Funding fluctuates due to federal funding, competition for research funding, and grant cycles from 2-5 years

2) Contracts

- **CSRC/CRTN is also funded by contracts with the Department of Water Resources (California Dept. Water Resources, through a subcontract with PSOMAS)**
- **Two Caltrans Agreements:** a service contract and a research contract.

3) California Real Time Network (CRTN)

- **CRTN Consortium Membership and CRTN Contributions for Services and Donations**



CSRC/CRTN SOCIAL MEDIA



CSRC recognized Dr. Yehuda Bock with the Founder's Award, April 2023; Greg Helmer, Sharona Bock, Yehuda Bock, and Dana Caccamise

Matt, Glenn, and Yehuda at CRTN

- https://linktr.ee/csrc_crtn
- <https://www.facebook.com/photo/?fbid=210087488762761&set=a.122560977515413>
- <https://www.instagram.com/p/Cyl-ol8MVV4/>
- <https://www.linkedin.com/feed/update/urn:li:activity:7120861298900271105/>
- <https://twitter.com/CSRC CRTN/status/1715099344867606933>



Spring Meeting Scripps Oceanography UC San Diego Thursday, April 30, 2026



Questions and Thank you

Contact: maria@ucsd.edu
(or mrturingan@ucsd.edu)
858-822-2156



Son, Lucas ,4th Grade

UC San Diego

